

Pacton Gold Inc.

I ? . Ž ((f \$ & \$ + ' - , - \$, %
 B 5 . Ž % * (* ; - * ' \$ *)
 5 1 Ž * % & ' - & , \$ \$ + \$ \$
 U W j c b 4 d f c U W j Y j b j Y g h c f g " V e a

09:49 15 Sep 2020

Pacton Gold reveals new target areas along the prolific Red Lake gold trend in Ontario

Pacton Gold Inc (CVE:PAC) (OTCPINK:PACXF) has wrapped up high-resolution magnetic surveys at four targets on its Red Lake exploration project in Ontario, it said Tuesday.

Initial survey results defined multiple prospective areas at the Gullrock property, which is located along the same trend that hosts the famed Red Lake gold mine operated by Australia's Evolution Mining Ltd (ASX:EVN).

Gullrock is also located contiguous to the Sobel property owned by Great Bear Resources Ltd (CVE:GBR), where two large spatiotemporal geochemical hydrocarbon (SGH) targets were recently identified and appear similar to those in Pacton's magnetic data, according to the company.

READ: Pacton Gold set for seismic survey at its Red Lake project carried out by neighbour Pure Gold Mining

Gullrock is now "an increased priority area," Pacton told investors in a statement. Results from the survey identified new targets and better defined existing priority targets.

Price: 0.89

Market Cap: \$33.28 m

1 Year Share Price Graph



January 2020 July 2020 January 2021

Share Information

Code: PAC

Listing: TSX-V

52 week High Low
1.81 0.35

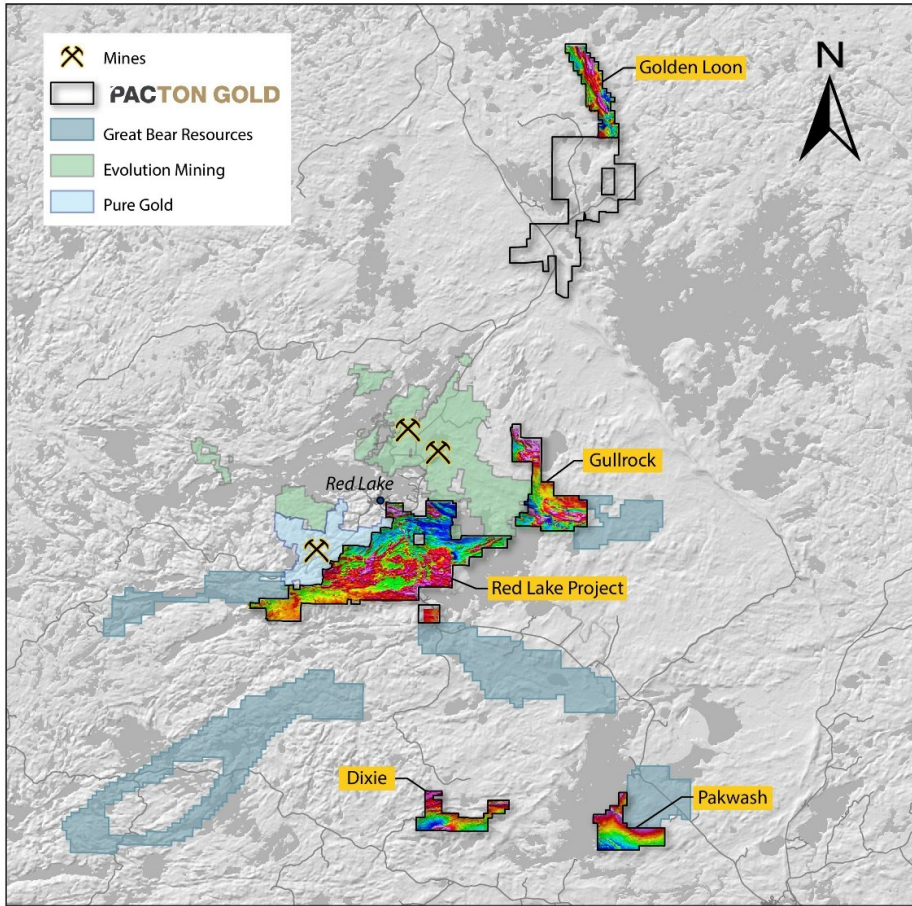
Sector: Gold & silver

Website: www.pactongold.com

Company Synopsis:

Pacton Gold Inc. (PAC :TSX-V) is a Canadian junior exploration company focused on acquiring, exploring and advancing mineral assets in key mining friendly locations globally.

action@proactiveinvestors.com



High-resolution airborne magnetics data from surveys completed in 2019 and 2020 at Pacton Gold Red Lake properties

Pacton said that the data will be "instrumental" in fine-tuning the drill targeting process for the upcoming drill program.

The survey covered a total of 2,931 line kilometres at 50-metre spacing at the Gullrock, Golden Loon, Dixie and Pakwash properties, which are all part of the Red Lake exploration project.

The new priority areas will be evaluated for targeting in an upcoming drilling campaign that is expected to begin in the fall of 2020.

Contact Angela at angela@proactiveinvestors.com

Follow her on Twitter @AHarmantas

Proactive Investors facilitate the largest global investor network across 4 continents in 4 languages. With a team of analysts, journalists & professional investors Proactive produce independent coverage on 1000's of companies across every sector for private investors, private client brokers, fund managers and international investor communities.

Contact us +44 (0)207 989 0813 action@proactiveinvestors.com

No investment advice

The Company is a publisher. You understand and agree that no content published on the Site constitutes a recommendation that any particular security, portfolio of securities, transaction, or investment strategy is suitable or advisable for any specific person. You understand that the Content on the Site is provided for information purposes only, and none of the information contained on the Site constitutes an offer, solicitation or recommendation to buy or sell a security. You understand that the Company receives either monetary or securities compensation for our services. We stand to benefit from any volume which any Content on the Site may generate.

You further understand that none of the information providers or their affiliates will advise you personally concerning the nature, potential, advisability, value, suitability or profitability of any particular security, portfolio of securities, transaction, investment, investment strategy, or other matter.

You understand that the Site may contain opinions from time to time with regard to securities mentioned in other products, including Company-related products, and that those opinions may be different from those obtained by using another product related to the Company. You understand and agree that contributors may write about securities in which they or their firms have a position, and that they may trade such securities for their own account. In cases where the position is held at the time of publication and such position is known to the Company, appropriate disclosure is made. However, you understand and agree that at the time of any transaction that you make, one or more contributors may have a position in the securities written about. You understand that price and other data is supplied by sources believed to be reliable, that the calculations herein are made using such data, and that neither such data nor such calculations are guaranteed by these sources, the Company, the information providers or any other person or entity, and may not be complete or accurate.

From time to time, reference may be made in our marketing materials to prior articles and opinions we have published. These references may be selective, may reference only a portion of an article or recommendation, and are likely not to be current. As markets change continuously, previously published information and data may not be current and should not be relied upon.

The Site does not, and is not intended to, provide investment, tax, accounting, legal or insurance advice, and is not and should not be construed as providing any of the foregoing. You should consult an attorney or other relevant professional regarding your specific legal, tax, investment or other needs as tailored to your specific situation.

In exchange for publishing services rendered by the Company on behalf of Pacton Gold Inc. named herein, including the promotion by the Company of Pacton Gold Inc. in any Content on the Site, the Company receives from said issuer annual aggregate cash compensation in the amount up to Twenty Five Thousand dollars (\$25,000).